



MINNESOTA'S SHOVEL READY PROGRAM CITY OF ISANTI, MN - ISANTI CENTENNIAL COMPLEX

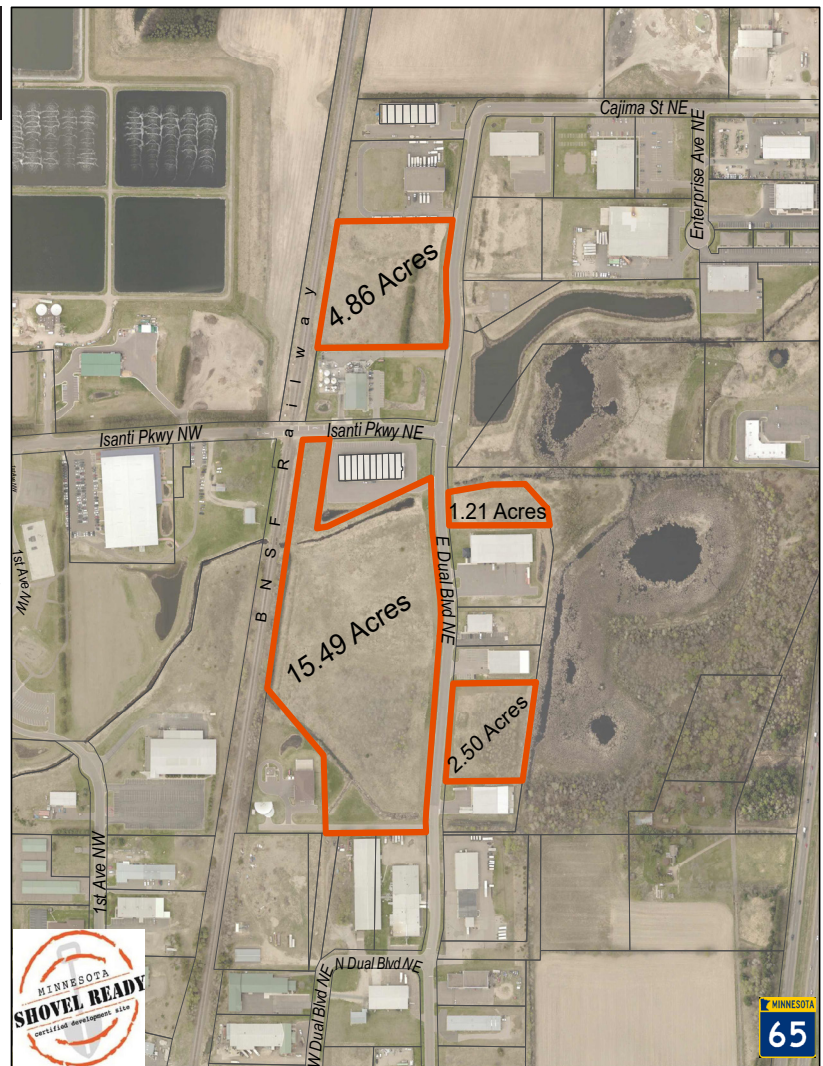


The City of Isanti, in partnership with the Minnesota Department of Employment and Economic Development, has identified four City-owned parcels as "Shovel Ready Certified." These parcels have had all the planning, zoning, surveys, title work, environmental studies, soils analysis, and public infrastructure engineering completed prior to being offered for sale.

A Certified Development Site is ready for your business in Isanti!

ISANTI CENTENNIAL COMPLEX HIGHLIGHTS:

- Four Minnesota Shovel Ready certified industrial lots, priced at \$1.00
- Easy access to MN State Hwy 65 & 95 and within an easy 10-minute drive to Interstate 35
- Fiber optic, sewer, water, and storm water infrastructure is existing
- Regional storm water ponds allow you to use more of your property
- Anoka Ramsey Community & Technical College is within 10 minutes and offer customized training services
- City of Isanti offers aggressive financial incentive packages to companies looking to locate in the Centennial Complex



ISANTI CENTENNIAL COMPLEX



TO SEE ALL LOT SPECIFICS VISIT:

<https://mn.gov/deed/business/locating-minnesota/land-bldg/shovel-ready/isanti.jsp>

FOR MORE INFORMATION ON THE CITY OF ISANTI SHOVEL-READY INDUSTRIAL SITES, CONTACT:

Ryan Kernosky, Community Development Director

763-444-5512 Ext. 115

rkernosky@cityofisanti.us